

Focused on the Future
2017 Heifer Sale



D186 – sells as Lot 2-1

Friday, July 28, 2017 • 10:00 a.m.

at the ranch, east of Estelline, Texas

Offering 60+ Angus & Charolais Weaned Heifers

Bradley 3 Ranch, Ltd.

Ranch raised bulls for Ranchers since 1955.

www.bradley3ranch.com

Sale Schedule

IMPORTANT UPDATES

THE HEIFERS WILL NOT ENTER THE SALE RING, BUT WILL BE PENNED FOR EASY VIEWING.

HEIFERS WEANED MAY 30, 2017

WE PLAN TO OFFER A FEW EXTRA, NON-SALE BOOK LOTS, CHECK BACK FOR UPDATES.

HEIFER VIDEO ONLINE...
TO BID ONLINE,
REGISTER AT
WWW.SUPERIORLIVESTOCK.COM

Welcome to the 2017 Weaned Heifer Sale!

This is our 6th annual Weaned Heifer Sale.

Sale Staff & Contacts –

Bradley 3 Ranch, Ltd
15591 CR K
Memphis, TX 79245
Mary Lou Bradley-Henderson, (940) 585-6471
James Henderson, (940) 585-6171
Doak Lambert, Auctioneer, (972) 471-1233

Load Out –

Load out of heifers will begin following the the sale. This is a cash and carry sale.

Sale Schedule –

July 27 – Sale heifers sorted by pen
Heifers available for viewing
Beverages available

July 28 – Heifer sale to start at **10 am**
Beverages and snacks available
Will load immediately after sale

Sale Information –

Heifers sold in Lot order, and penned by Lot series, heifers with lot numbers 1-1 are in pen 1, Lots 2-2 are in pen 2 and so on. Heifers do not enter the sale ring, but they are penned very close by, for viewing. The sale will feature video and we encourage you to mark your sale catalog as to those heifers you have an interest in. Angus heifers sell first, followed by the Charolais heifers.

Registration Papers –

Registration papers will be transferred to the new owner.

The Auction and Minimum Prices –

Each heifer has a minimum price published in our sale book. Bidding will begin at these minimum prices. **Each heifer will be sold to the highest bidder and disputes will be settled by the Auctioneer.**

Sale Heifer Information –

- All heifers have been weaned 30 days +
- Heifers are NOT Bangs Vaccinated.
- All heifers have EID and Visual Ear Tag
- All the Angus heifers have been i50k Tested

Liabilities –

All persons attending the Bradley 3 Ranch, Ltd sale do so at their own risk. Bradley 3 Ranch, Ltd assumes no liability, legal or otherwise, for any accidents that might occur on or about the premises. Announcements made at the sale from the auction block will take precedence over the statements in the sale book.

Genetic Defect Policy –

Any Angus sale heifers that were potential genetic defect carriers have been tested and are known to be free of AM, NH, CA, DD and OS as of 6/15/17.

Directions to the ranch –

See back of catalog.

Welcome



Welcome to the Bradley 3 Ranch 6th annual summer heifer sale. We are into some interesting times, as I write this greeting ahead of the American Angus Assn. transition to single-step methodology for generating EPD's as well as adjusting the index numbers for the dollar values. So with that being said, this sale book will show you the latest numbers being generated using the new format, with this evolution of change we are all in for a bit of a learning curve! For the folks that are seeking females that eat less and do more, with extreme calving ease and function... we will have those in the offering. For our returning customers, we have sprinkled in some new bloodlines for you to consider, and yes we are open to some lively discussion about this.

As you review the sale data, please note our calving season is 60 days, but not all the cows have the same 60 days, from a work load we drop off bulls over a 2 week time period, with the A/I work done ahead of the bulls going out. In addition we realize most seed stock operations roll the females out of the herd before the cow is 4 years old, and here we do just the opposite, for a cow to stay in our herd she has to work, no matter what the weather does, to that point there are some really nice heifers being offered that have the heritage of fertility, ability to go forage and the structure to travel, from some older proven cows.

The Charolais heifers being offered are a nice set, out of some very top end bulls in the Charolais breed. These heifers were raised with the same strict culling process, and no creep feed.

We too continue to adapt and change, so new this year is the opportunity to bid on line at **Superior Livestock's Click to Bid system**, (see *"how to participate"* on page 16). The heifer videos will be up on line mid July for your viewing. We always look forward to you being at the sale, the opportunity to view the cattle, see friends and meet new people, and to bid on cattle you want. However, we understand that life does not always let you attend a sale in person. So if bidding on line is not for you, feel free to call us, we are here to make this easy for you, and you may also call Superior at (817) 378-3380.

In closing, we want to say Thank You to all you who have purchased cattle from us. Your investment allows us to re-invest in our people, the land and cattle. Rest assured we are very dedicated to make a difference for you with better cattle. We look forward to being your host on July 28, here at the ranch.

Bradley 3 Ranch, Ltd.

15991 CR K
Memphis, TX 79245
806-888-1062, office
806-888-1010, fax
Mary Lou Bradley-Henderson
940-585-6471
James Henderson
940-585-6171
Minnie Lou Bradley
www.bradley3ranch.com

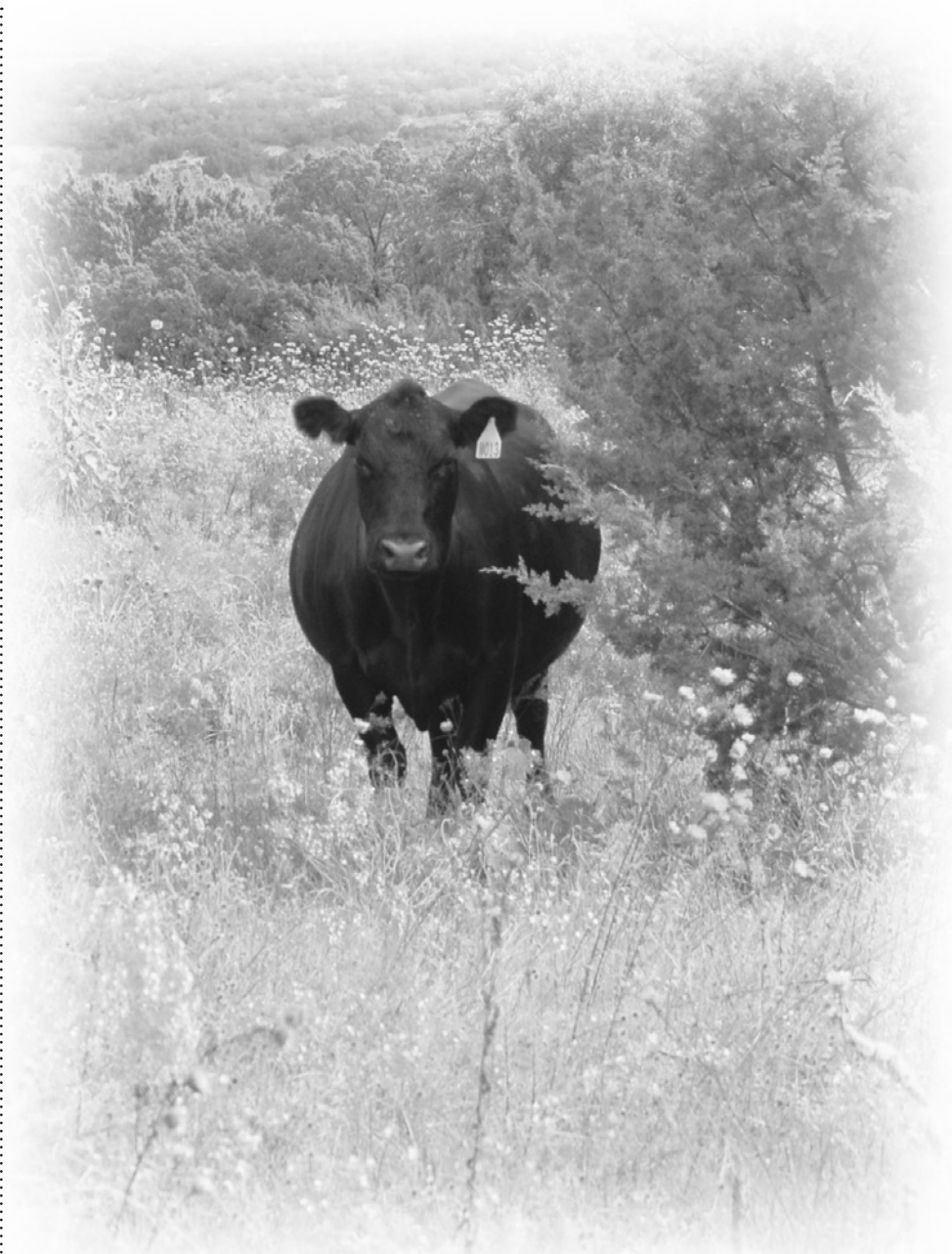
A Herd with a History...

***Since 1958,
our cattle have
worked for us and
our customers!***

Bradley 3 Ranch, Ltd.



"Because the cattle work..."



2014 Minnie Lou Bradley inducted into Saddle & Sirloin Portrait Gallery

2013 BIF Seedstock Producer of the Year

2009 CAB Commitment to Excellence Award

2009 NCBA Regional Land Stewardship Recipient

2008 American Angus Assn. Beef Heritage Award

2006 National Cowgirl Hall of Fame Inductee (Minnie Lou Bradley)

2004 B3R Country Meats introduced Certified Angus Beef® Natural

2003 NCBA Innovative Cattleman Award

2002 Ladd Hitch Award

2001 BIF Pioneer Award

1-1 B3R D206 Carla Y409 B171 [OSF]

Adj Yrlg	Birth Date:	10/02/16	i50K	Cow	18752064	Tattoo:	D206		
Hip Ht	CED	BW	WW	YW	RADG	DMI	YH		
	+10 .35	-1.0 .50	+39 .44	+69 .36	+11 .23	+62 .23	+5 .39		
Adj Yrlg	SC	Doc	HP	CEM	Milk	MW	MH		
Scr Cir	+83 .38	+17 .32	+12.0 .15	+12 .24	+27 .25	-11 .31	+1 .37		
Adj	\$EN	CW	Marb	RE	Fat	\$W			
% IMF	+3.93	+35 .38	+60 .34	+85 .34	-0.02 .30		+49.10		
% IMF	S A V Final Answer 0035 [AMF-CAF-XF]						\$F		
Ratio	S A V Pioneer 7301 [AMF-CAF-XF]						+8.51		
	B3R Pioneer Wave Y409 [AMF-CAF-XF]						\$G		
Adj RE	17217486	Gardens Wave [AMF-CAF-XF]			B3R R026 Blkcap CDTStk M258		+43.27		
RE		HR T424 RO26 GW					\$QG		
Ratio		B3R Tender Ten R065 [OSC-AMF-XF]					+33.39		
		B3R Back To Basics U077 [AMF-CAF-XF]					\$YG		
Adj	B3R B171 Carla U077 9175		B3R S024 Elise P061 N191					+9.88	
Rib Fat	+18105993		Finks 5522-6148 [DDF]					\$B	
	B3R9175 5522-6148Carla855		B3R 400 Carla 8727					+112.48	
Rib Fat	BW	CE	BWR	ADJ WW	WWR	ADJ YW	YWR	Test ADG	GR
Ratio	54	1	87	505	98				
Adj	Dam's Production Record					Dam's Ultrasound Production Record			
Rump Fat	ACT BW	BWR	WWR	YWR	% IMF	RE	Fat	RU Fat	
	1-54	1-87	1-98						
Rump	Price: \$1300								
Fat Ratio	Real nice heifer to start the sale with. She is a daughter of, Pioneer Wave Y409, the all time selling high bull to ABS For \$35,000 out of a Back to Basics daughter. Her Grand								



B3R Pioneer Wave Y409 [AMF-CAF-XF]

2-1 B3R D186 Lilly W299 B173 [OSF]

Adj Yrlg	Birth Date:	09/27/16	i50K	Cow	18753158	Tattoo:	D186		
Hip Ht	CED	BW	WW	YW	RADG	DMI	YH		
	+14 .37	-8 .53	+53 .47	+82 .40	+14 .27	-34 .27	-4 .42		
Adj Yrlg	SC	Doc	HP	CEM	Milk	MW	MH		
Scr Cir	+23 .42	+21 .36	+7.2 .21	+12 .30	+10 .31	-9 .36	-6 .41		
Adj	\$EN	CW	Marb	RE	Fat	\$W			
% IMF	+22.86	+25 .41	+61 .37	+53 .37	+0.63 .33		+49.76		
% IMF	Sitz Traveler 8180 [AMF-CAF-XF]						\$F		
Ratio	S A V Final Answer 0035 [AMF-CAF-XF]						+41.93		
	K C F Bennett Absolute [AMF-CAF-XF]						\$G		
Adj RE	16430795	Wulffs Ext 6106			B3R Prime Wave T299 [AMF-OSF]		+34.12		
RE		Thomas Miss Lucy 5152 [AMF-DDF-NHF]	Thomas Miss Lucy 3050 [AMC]				\$QG		
Ratio		B3R X183 Elector T299 T248			B3R T248 KEP Miss M070 8123 [AMF]		+33.77		
		B3R B173 Lilly X183 N123					\$YG		
Adj	+18106073		B3R 8082 3173 Elector 4013 [AMF-OSF]					\$B	
Rib Fat	B3R N123 8082 Blackbird 203 [AMF]		B3R Blackbird 2075 P					+104.36	
Rib Fat	BW	CE	BWR	ADJ WW	WWR	ADJ YW	YWR	Test ADG	GR
Ratio	58	1	93	578	112				
Adj	Dam's Production Record					Dam's Ultrasound Production Record			
Rump Fat	ACT BW	BWR	WWR	YWR	% IMF	RE	Fat	RU Fat	
	1-58	1-93	1-112						
Rump	Price: \$1300								
Fat Ratio	She is big and pretty, and offers a different pedigree for our repeat customers. Her damn comes from a long line of stay-ability family. WW ratio of 112.								



Lot 2-1, B3R D186 Lilly W299 B173 [OSF]

3-1 B3R D290 Carmen B141 X191 [OSF]

Adj Yrlg	Birth Date:	10/27/16	i50K	Cow	18752140	Tattoo:	D290		
Hip Ht	CED	BW	WW	YW	RADG	DMI	YH		
	+6 .28	+7 .48	+49 .42	+86 .33	+21 .17	-06 .17	-4 .36		
Adj Yrlg	SC	Doc	HP	CEM	Milk	MW	MH		
Scr Cir	+1.61 .36	+26 .32	+14.0 .13	+9 .21	+19 .24	-16 .28	-5 .34		
Adj	\$EN	CW	Marb	RE	Fat	\$W			
% IMF	+11.82	+30 .34	+50 .29	+50 .30	+0.16 .26		+51.73		
% IMF	Gardens Wave [AMF-CAF-XF]						\$F		
Ratio	B3R Western Swing W446 [OHF]						+45.71		
	B3R Tender Swing B141 [OSF]						\$G		
Adj RE	18100085	B3R Retail Tender T232 [OSF]			B3R R215 KEP Miss N117 M077		+34.56		
RE		B3R X193 Elise T232 T113			B3R T113 Elise L234 N191		\$QG		
Ratio		Gardens Wave [AMF-CAF-XF]					+29.79		
		B3R Prime Wave T299 [AMF-OSF]			B3R R060 Pride 0004 N295		\$YG		
Adj	B3R X191 Carmen T299 T056		B3R 1147 8100 Bando 8092 [AMF]					\$B	
Rib Fat	16909304		B3R T056 Carmen 1147 R309 [AMF]			B3R R309 Carmen 9201 1008		+111.22	
Rib Fat	BW	CE	BWR	ADJ WW	WWR	ADJ YW	YWR	Test ADG	GR
Ratio	73	1	105	519	106				
Adj	Dam's Production Record					Dam's Ultrasound Production Record			
Rump Fat	ACT BW	BWR	WWR	YWR	% IMF	RE	Fat	RU Fat	
	5-70	5-98	5-96	3-96	3-102	3-99	3-108	3-104	
Rump	Price: \$1300								
Fat Ratio	This heifer lineage is old and proven, just gets it done. Her grand dam is 10 year and still in B3R Herd.								

4-1 B3R D067 KEP Miss B325 U123 [OSF]

Adj Yrlg	Birth Date:	11/12/16	i50K	Cow	18751954	Tattoo:	D067		
Hip Ht	CED	BW	WW	YW	RADG	DMI	YH		
	+15 .30	-3.1 .51	+46 .45	+64 .35	+18 .19	-75 .19	+1 .39		
Adj Yrlg	SC	Doc	HP	CEM	Milk	MW	MH		
Scr Cir	+1.73 .38	+25 .34	+10.3 .15	+14 .24	+31 .27	+7 .31	-1 .37		
Adj	\$EN	CW	Marb	RE	Fat	\$W			
% IMF	-2.21	+13 .36	+52 .31	+19 .32	+0.33 .28		+65.42		
% IMF	B3R Tender Ten R065 [OSC-AMF-XF]						\$F		
Ratio	B3R Back To Basics U077 [AMF-CAF-XF]						+24.67		
	B3R B325 Elector BtB W278 [OSF]						\$G		
Adj RE	18100059	B3R Tender Ten R065 [OSC-AMF-XF]			B3R S024 Elise P061 N191		+32.51		
RE		B3R W278 Blackbird R065 R141 [OSF]			B3R R141 Blackbird RDAm 203 [AMF]		\$QG		
Ratio		B3R 1147 8100 Bando 8092 [AMF]			B3R R303 Bando 1147 0014 [AMF-OHF]		+30.53		
		B3R U123 KEP Miss R303 R061 [AMF]			B3R 0014-3173 Queen 8212		\$YG		
Adj	B3R U123 KEP Miss R303 R061 [AMF]		B3R M048 Cafd 0125 [AMF-NHF]					\$B	
Rib Fat	16317776		B3R R061 KEP Miss M048 N261 [AMF]			B3R N261 9201 Miss 7182		+82.47	
Rib Fat	BW	CE	BWR	ADJ WW	WWR	ADJ YW	YWR	Test ADG	GR
Ratio	78	1	110	561	113				
Adj	Dam's Production Record					Dam's Ultrasound Production Record			
Rump Fat	ACT BW	BWR	WWR	YWR	% IMF	RE	Fat	RU Fat	
	6-73	6-108	7-105	5-102	5-90	5-95	5-106	5-90	
Rump	Price: \$1300								
Fat Ratio	The mating options are huge, and just think about the possibilities. Dam U123 has 3 daughters in the B3R Herd, that made it in blizzard and years of drought. One might note								

5-1 B3R D339 Blackbird Y184 T080 [osf]

Table with columns: Adj Yrlg Hip Ht, Birth Date, CED, BW, WW, YW, RADG, DMI, YH, etc. Includes production and ultrasound records.

7-2 B3R D054 Primrose U077 2011 [OSF]

Table with columns: Adj Yrlg Hip Ht, Birth Date, CED, BW, WW, YW, RADG, DMI, YH, etc. Includes production and ultrasound records.

9-2 B3R D236 Elise Z422 Y265 [OSF]

Table with columns: Adj Yrlg Hip Ht, Birth Date, CED, BW, WW, YW, RADG, DMI, YH, etc. Includes production and ultrasound records.

6-1 B3R D182 Primrose A263 B046 [osf]

Table with columns: Adj Yrlg Hip Ht, Birth Date, CED, BW, WW, YW, RADG, DMI, YH, etc. Includes production and ultrasound records.

8-2 B3R D282 Viola X147 Y053 [OHP-OSF]

Table with columns: Adj Yrlg Hip Ht, Birth Date, CED, BW, WW, YW, RADG, DMI, YH, etc. Includes production and ultrasound records.

10-2 B3R D325 Blackbird Y184 W267 [OSF]

Table with columns: Adj Yrlg Hip Ht, Birth Date, CED, BW, WW, YW, RADG, DMI, YH, etc. Includes production and ultrasound records.

16-3		B3R D046 Blackcap U077 B371 [OSF]							
Adj Yrlg	Birth Date:	i50K	Cow	18755362			Tattoo: D046		
Hip Ht	CED	BW	WW	YW	RADG	DMI	YH		
	+8 .35	+1.1 .50	+39 .44	+65 .36	+14 .17	-04 .17	+0 .39		
Adj Yrlg	SC	Doc	HP	CEM	Milk	MW	MH		
Scr Cir	+80 .38	+25 .33	+12.7 .14	+6 .27	+14 .28	-27 .34	-2 .39		
Adj	\$EN	CW	Marb	RE	Fat	\$W			
% IMF	+24.08	+17 .35	+56 .31	+13 .32	+019 .27	+35.71			
% IMF	B3R 0004 Electra 8082-8017 [OSC-AMF] \$F								
Ratio	B3R Tender Ten R065 [OSC-AMF-XF] +15.78								
	B3R N127 5522 Blackbird 203 [OSF] \$G								
Adj RE	16317735 B3R P061 M048 Cafd M098 [AMF-NHF] +34.08								
	B3R S024 Elise P061 N191 \$QG								
RE	B3R N191 0128 Elise 9032 +32.01								
Ratio	Gardens Wave [AMF-CAF-XF] \$YG								
	B3R Western Swing W446 [OHF] +2.07								
Adj	B3R B371 Blackcap W446 X157 \$B								
Rib Fat	18100078 G A R Ultimate [AMF-CAF-XF] +78.22								
	B3R X157 Blackcap GARUlt U056								
	B3R U056 Blackcap N193 S227								
Rib Fat	BW	CE	BWR	ADJ WW	WWR	ADJ YW	YWR	Test ADG	GR
Ratio	69	1	108	472	91				
Adj	Dam's Production Record				Dam's Ultrasound Production Record				
Rump Fat	ACT BW	BWR	WWR	YWR	% IMF	RE	Fat	RU Fat	
Ratio	1-69	1-108	1-91						
Rump	Price: \$1300								
Fat Ratio	If you need calving ease and low input female, look her. If you have drifted with frame, she can help.								



Lot 18-3, B3R D255 Lady Z422 Y078 [OSF]

19-3		B3R D087 Elise Y088 X193 [OSF]							
Adj Yrlg	Birth Date:	i50K	Cow	18751969			Tattoo: D087		
Hip Ht	CED	BW	WW	YW	RADG	DMI	YH		
	+5 .27	+1.1 .49	+44 .43	+74 .34	+17 .16	-18 .16	+1 .37		
Adj Yrlg	SC	Doc	HP	CEM	Milk	MW	MH		
Scr Cir	+1.27 .37	+26 .31	+7.1 .12	+5 .20	+21 .24	-11 .28	-2 .33		
Adj	\$EN	CW	Marb	RE	Fat	\$W			
% IMF	+10.78	+24 .34	+47 .29	+27 .30	+024 .26	+46.85			
% IMF	B3R S067 CdtStkmn M070 8017 [OSC-AMF] \$F								
Ratio	B3R Arrival U129 [AMF-OSF] +30.74								
	B3R R069 Blackbird M048 N288 [AMF] \$G								
Adj RE	17241141 B3R M048 Cafd 0125 [AMF-NHF] +30.61								
	B3R R033 KEP Miss M048 N147 [AMF] \$QG								
RE	B3R N147 9201 Kep 8215 +28.65								
Ratio	G A R Retail Product [AMF-CAF-XF] \$YG								
	B3R Retail Tender T232 [OSF] +1.96								
Adj	B3R X193 Elise T232 T113 \$B								
Rib Fat	16909306 Tehama Gridmaker L234 [AMF-CAF-XF] +94.18								
	B3R T113 Elise L234 N191								
	B3R N191 0128 Elise 9032								
Rib Fat	BW	CE	BWR	ADJ WW	WWR	ADJ YW	YWR	Test ADG	GR
Ratio	76	1	107	499	101				
Adj	Dam's Production Record				Dam's Ultrasound Production Record				
Rump Fat	ACT BW	BWR	WWR	YWR	% IMF	RE	Fat	RU Fat	
Ratio	4-67	4-94	4-95	3-97	3-103	3-104	3-111	3-101	
Rump	Price: \$1300								
Fat Ratio	Maternal sister to B3R Herd bull B3R Tender Swing B141.								

17-3		B3R D286 Carmen Z187 W220 [OSF]							
Adj Yrlg	Birth Date:	i50K	Cow	18752136			Tattoo: D286		
Hip Ht	CED	BW	WW	YW	RADG	DMI	YH		
	+9 .30	-1.5 .50	+41 .44	+63 .36	+06 .18	+03 .18	+0 .39		
Adj Yrlg	SC	Doc	HP	CEM	Milk	MW	MH		
Scr Cir	+1.48 .39	+20 .34	+10.0 .15	+13 .23	+12 .26	-21 .29	-4 .35		
Adj	\$EN	CW	Marb	RE	Fat	\$W			
% IMF	+25.55	+23 .36	+96 .31	-04 .32	+077 .27	+39.43			
% IMF	Gardens Wave [AMF-CAF-XF] \$F								
Ratio	B3R Western Swing W446 [OHF] +9.66								
	B3R R215 KEP Miss N117 M077 \$G								
Adj RE	17521647 B3R Grass Master Z187 [OHF-OSF] +32.69								
	B3R S053 GAR Ret Prd N309 [OSC-AMF] \$QG								
RE	B3R X194 Carla S053 T121 [OSF] +43.47								
Ratio	B3R T121 Carla P197 0084 \$YG								
	B3R 0004 Electra 8082-8017 [OSC-AMF] +43.47								
Adj	B3R W220 Carmen R065 R230 [OSF] \$B								
Rib Fat	#16634458 B3R Tender Ten R065 [OSC-AMF-XF] +87.45								
	B3R N127 5522 Blackbird 203 [OSF] -10.78								
	B3R M070 Stockman 9180 [AMF] \$B								
	B3R R230 Carmen M070 8175 +87.45								
	B3R 8175 3173 Carmen 205								
Rib Fat	BW	CE	BWR	ADJ WW	WWR	ADJ YW	YWR	Test ADG	GR
Ratio	71	1	96	496	99				
Adj	Dam's Production Record				Dam's Ultrasound Production Record				
Rump Fat	ACT BW	BWR	WWR	YWR	% IMF	RE	Fat	RU Fat	
Ratio	6-67	6-98	6-101	4-100	4-116	4-95	4-85	4-88	
Rump	Price: \$1300								
Fat Ratio	Dam has been a solid performer. This heifer delivers on with a very complete package, not a lot risk owning this heifer.								

18-3		B3R D255 Lady Z422 Y078 [OSF]							
Adj Yrlg	Birth Date:	i50K	Cow	18752107			Tattoo: D255		
Hip Ht	CED	BW	WW	YW	RADG	DMI	YH		
	+6 .29	+1.2 .50	+32 .44	+66 .35	+22 .19	+06 .19	+2 .39		
Adj Yrlg	SC	Doc	HP	CEM	Milk	MW	MH		
Scr Cir	+73 .38	+23 .31	+8.3 .15	+10 .23	+14 .26	-11 .30	-1 .36		
Adj	\$EN	CW	Marb	RE	Fat	\$W			
% IMF	+21.12	+24 .36	+67 .31	+71 .32	-007 .28	+21.43			
% IMF	Cross Down T Stockman 3525 \$F								
Ratio	B3R M070 Stockman 9180 [AMF] +19.92								
	B3R 9180 270 Queen 114 [AMF] \$G								
Adj RE	17515429 B3R Ranch Hand Z422 [AMF-OSF] +46.38								
	Gardens Wave [AMF-CAF-XF] \$QG								
RE	HR W501 Wave R150 [AMF] +35.77								
Ratio	B3R R150 Elba 9193 1256 \$YG								
	G A R Retail Product [AMF-CAF-XF] +10.61								
Adj	B3R Y078 Lady T079 N065 \$B								
Rib Fat	17224544 O C C Emblazon 854E [CAF-DDF-XF] +104.01								
	B3R N065 854E Lady 1258								
	B3R 1258 6064 Lady 7182								
Rib Fat	BW	CE	BWR	ADJ WW	WWR	ADJ YW	YWR	Test ADG	GR
Ratio	78	1	110	516	104				
Adj	Dam's Production Record				Dam's Ultrasound Production Record				
Rump Fat	ACT BW	BWR	WWR	YWR	% IMF	RE	Fat	RU Fat	
Ratio	4-83	4-111	4-103	3-104	3-116	3-107	3-82	3-99	
Rump	Price: \$1300								
Fat Ratio	More of the B3R Classic female, quite disposition, very correct and balanced. Don't let her get away.								

20-3		B3R D241 Queen Z422 X274 [OSF]							
Adj Yrlg	Birth Date:	i50K	Cow	18752093			Tattoo: D241		
Hip Ht	CED	BW	WW	YW	RADG	DMI	YH		
	-1 .26	+5.5 .47	+42 .42	+74 .32	+25 .15	-27 .15	+1 .35		
Adj Yrlg	SC	Doc	HP	CEM	Milk	MW	MH		
Scr Cir	+24 .34	+20 .30	+11.7 .11	+6 .19	+8 .23	-9 .27	-1 .33		
Adj	\$EN	CW	Marb	RE	Fat	\$W			
% IMF	+26.00	+31 .33	+38 .27	+69 .29	-010 .24	+13.14			
% IMF	Cross Down T Stockman 3525 \$F								
Ratio	B3R M070 Stockman 9180 [AMF] +33.98								
	B3R 9180 270 Queen 114 [AMF] \$G								
Adj RE	17515429 B3R Ranch Hand Z422 [AMF-OSF] +34.24								
	Gardens Wave [AMF-CAF-XF] \$QG								
RE	HR W501 Wave R150 [AMF] +24.76								
Ratio	B3R R150 Elba 9193 1256 \$YG								
	O C C Emblazon 854E [CAF-DDF-XF] +9.48								
Adj	B3R X274 Queen T222 S219 \$B								
Rib Fat	16909382 B3R Added Efficiency T222 [AMF] +114.87								
	B3R N095 5522-6148 Finks 203 [AMF-DDF] \$B								
	B3R S219 Queen N095 8174								
	B3R 8174 3091 Queen 114								
Rib Fat	BW	CE	BWR	ADJ WW	WWR	ADJ YW	YWR	Test ADG	GR
Ratio	73	1	103	518	105				
Adj	Dam's Production Record				Dam's Ultrasound Production Record				
Rump Fat	ACT BW	BWR	WWR	YWR	% IMF	RE	Fat	RU Fat	
Ratio	3-77	3-104	3-98	1-106	1-123	1-114	1-120	1-134	
Rump	Price: \$1300								
Fat Ratio	Efficient heifer with WW ratio of 105. If you want to wean more pounds to the acre, take a look at this one. Feed conversion is still the driving force in making or losing money in								

44-6 B3R D145 Erioria X523 A321 [OSF]

Table with columns: Adj Yrlg, Hip Ht, Birth Date, CED, BW, WW, YW, RADG, DMI, YH, Adj Yrlg, Scr Cir, Adj, % IMF, % IMF Ratio, Adj RE, RE Ratio, Adj Rib Fat, Rib Fat Ratio, Rump Fat, Rump Fat Ratio. Includes dam and ultrasound production records.

45-6 B3R D244 Lady Z422 W082 [OSF]

Table with columns: Adj Yrlg, Hip Ht, Birth Date, CED, BW, WW, YW, RADG, DMI, YH, Adj Yrlg, Scr Cir, Adj, % IMF, % IMF Ratio, Adj RE, RE Ratio, Adj Rib Fat, Rib Fat Ratio, Rump Fat, Rump Fat Ratio. Includes dam and ultrasound production records.

46-6 B3R D041 Blackcap Y088 S051 [OSF]

Table with columns: Adj Yrlg, Hip Ht, Birth Date, CED, BW, WW, YW, RADG, DMI, YH, Adj Yrlg, Scr Cir, Adj, % IMF, % IMF Ratio, Adj RE, RE Ratio, Adj Rib Fat, Rib Fat Ratio, Rump Fat, Rump Fat Ratio. Includes dam and ultrasound production records.

47-6 B3R D257 Miss Doll W242 Z112 [OSF]

Table with columns: Adj Yrlg, Hip Ht, Birth Date, CED, BW, WW, YW, RADG, DMI, YH, Adj Yrlg, Scr Cir, Adj, % IMF, % IMF Ratio, Adj RE, RE Ratio, Adj Rib Fat, Rib Fat Ratio, Rump Fat, Rump Fat Ratio. Includes dam and ultrasound production records.

48-6 B3R D309 Carmen Z180 T056 [OSF]

Table with columns: Adj Yrlg, Hip Ht, Birth Date, CED, BW, WW, YW, RADG, DMI, YH, Adj Yrlg, Scr Cir, Adj, % IMF, % IMF Ratio, Adj RE, RE Ratio, Adj Rib Fat, Rib Fat Ratio, Rump Fat, Rump Fat Ratio. Includes dam and ultrasound production records.

49-6 B3R D078 Queen A101 W215 [OSF]

Table with columns: Adj Yrlg, Hip Ht, Birth Date, CED, BW, WW, YW, RADG, DMI, YH, Adj Yrlg, Scr Cir, Adj, % IMF, % IMF Ratio, Adj RE, RE Ratio, Adj Rib Fat, Rib Fat Ratio, Rump Fat, Rump Fat Ratio. Includes dam and ultrasound production records.

62-9 B3R D137 Pride X523 A334 [OSF]									
Adj Yrlg Hip Ht	Birth Date: 11/17/16	i50K	Cow	18752009	Tattoo: D137				
	CED	BW	WW	YW	RADG	DMI	YH		
	+14 .32	-3.8 .52	+4 .45	+0 .37	+0.2 .20	-47 .20	-7 .41		
Adj Yrlg Scr Cir	SC	Doc	HP	CEM	Milk	MW	MH		
	+0.07 .39	+16 .34	+11.9 .16	+11 .26	+17 .28	-35 .33	-5 .39		
Adj % IMF	\$EN	CW	Marb	RE	Fat	\$W			
	+35.22	-17 .37	+7.6 .33	+1.1 .33	+0.37 .29	+2.83			
% IMF Ratio	Gardens Highmark [AMF-CAF-XF]						\$F		
	Gardens Wave [AMF-CAF-XF]						-54.48		
	Green Garden Lady 6255 S2						\$G		
Adj RE	16927035	B3R 9030 DL 7585				+44.53			
		B3R R191 Blackcap 9030 1220 [AMF]				\$QG			
		B3R 1220 7095 Queen 3112							
RE Ratio		B3R N193 854E Emblazon 9180 [AMF-CAF]				+38.34			
		B3R T296 Emblazon N193 1046 [AMF-DDF]				\$YG			
		B3R 1046 8082 Blkcap 9011				+6.19			
Adj Rib Fat	B3R A334 Pride T296 W140 [OSF]	B3R S053 GAR Ret Prd N309 [OSC-AMF]				\$B			
	17779559	B3R W140 Pride S053 S207				+19.63			
		B3R S207 Pride M048 M255							
Rib Fat Ratio	BW	CE	BWR	ADJ WW	WWR	ADJ YW	YWR	Test ADG	GR
	54	1	80	400	81				
Adj Rump Fat	Dam's Production Record				Dam's Ultrasound Production Record				
	ACT BW	BWR	WWR	YWR	% IMF	RE	Fat	RU Fat	
	2-53	2-86	2-91	1-98	1-101	1-88	1-100	1-117	
Rump Fat Ratio	Price: \$1200								
	She has the wow factor, with extreme calving ease and \$EN. Her young Dam already has produced a daughter in the B3R herd!								

64-9 B3R D285 Blackcap Z180 T152 [OSF]									
Adj Yrlg Hip Ht	Birth Date: 11/27/16	i50K	Cow	18774045	Tattoo: D285				
	CED	BW	WW	YW	RADG	DMI	YH		
	+5 .29	+4 .45	+38 .40	+61 .35	+14 .17	-17 .17	-1 .39		
Adj Yrlg Scr Cir	SC	Doc	HP	CEM	Milk	MW	MH		
	+4.48 .38	+20 .32	+10.8 .15	+10 .22	+27 .25	+7 .29	-1 .35		
Adj % IMF	\$EN	CW	Marb	RE	Fat	\$W			
	+3.80	+28 .34	+7.5 .30	+2.1 .31	+0.29 .27	+45.27			
% IMF Ratio	B3R Tender Ten R065 [OSC-AMF-XF]						\$F		
	B3R W233 Elector TendTn R310 [OSF]						+12.52		
	B3R R310 Daisy 0128 0135 [AMF]						\$G		
Adj RE	17521640	B3R Retail Tender T232 [OSF]				+37.68			
		B3R X189 Blackbird T232 T037 [OSF]				\$QG			
		B3R T037 Blackbird 0097 R264 [AMF-OS]							
RE Ratio		B3R 8100 270 Bando 3149				+38.04			
		B3R 1147 8100 Bando 8092 [AMF]				\$YG			
		B3R 8092 5029 Blackbird 4004 [AMF]				-36			
Adj Rib Fat	B3R T152 Blackcap 1147 P090 [AMF]	B3R M048 Cafd 0125 [AMF-NHF]				\$B			
	#16020140	B3R P090 M048 Blackcap M209				+107.08			
		B3R M209 9193 Blkcap 7748							
Rib Fat Ratio	BW	CE	BWR	ADJ WW	WWR	ADJ YW	YWR	Test ADG	GR
	53	1	83	420	84				
Adj Rump Fat	Dam's Production Record				Dam's Ultrasound Production Record				
	ACT BW	BWR	WWR	YWR	% IMF	RE	Fat	RU Fat	
	4-71	4-103	7-106	6-103	6-101	6-99	6-105	6-90	
Rump Fat Ratio	Price: \$1200								
	Twin calf to Lot 65-9, out of 10 year old cow.								

63-9 B3R D303 Carmen Y248 Z248 [OSF]									
Adj Yrlg Hip Ht	Birth Date: 10/29/16	i50K	Cow	18752152	Tattoo: D303				
	CED	BW	WW	YW	RADG	DMI	YH		
	+9 .30	-1.9 .50	+1 .43	-2 .34	+0.7 .17	-81 .17	-7 .38		
Adj Yrlg Scr Cir	SC	Doc	HP	CEM	Milk	MW	MH		
	-64 .37	+18 .29	+9.8 .13	+7 .22	+7 .25	-25 .30	-1.1 .36		
Adj % IMF	\$EN	CW	Marb	RE	Fat	\$W			
	+46.28	-23 .35	+4.9 .30	+2.0 .31	+0.12 .26	-16.35			
% IMF Ratio	Gardens Wave [AMF-CAF-XF]						\$F		
	B3R Prime Wave T299 [AMF-OSF]						-48.44		
	B3R R060 Pride 0004 N295						\$G		
Adj RE	17241162	B3R N193 854E Emblazon 9180 [AMF-CAF]				+40.22			
		B3R U035 Queen N193 S234 [AMF]				\$QG			
		B3R S234 Queen M048 M205							
RE Ratio		Gardens Wave [AMF-CAF-XF]				+29.41			
		B3R Real Money X523 [AMF-DDF-OSF]				\$YG			
		B3R R191 Blackcap 9030 1220 [AMF]				+10.81			
Adj Rib Fat	B3R Z248 Carmen X523 T265	B3R M070 Stockman 9180 [AMF]				\$B			
	17521700	B3R T265 Carmen M070 8209 [AMF]				+9.35			
		B3R 8209 270 Carmen 017							
Rib Fat Ratio	BW	CE	BWR	ADJ WW	WWR	ADJ YW	YWR	Test ADG	GR
	63	1	90	342	69				
Adj Rump Fat	Dam's Production Record				Dam's Ultrasound Production Record				
	ACT BW	BWR	WWR	YWR	% IMF	RE	Fat	RU Fat	
	3-62	3-93	3-88	1-96	1-100	1-96	1-119	1-85	
Rump Fat Ratio	Price: \$1200								
	Good investment here, a lot of calving ease and \$EN. Maternal brother to \$8250 bull in 2016 B3R Bull Sale.								

65-9 B3R D284 Blackcap Z180 T152 [OSF]									
Adj Yrlg Hip Ht	Birth Date: 11/27/16	i50K	Cow	18774044	Tattoo: D284				
	CED	BW	WW	YW	RADG	DMI	YH		
	+8 .28	-1.2 .44	+31 .39	+51 .35	+11 .16	+23 .16	-2 .38		
Adj Yrlg Scr Cir	SC	Doc	HP	CEM	Milk	MW	MH		
	+3.36 .38	+6 .32	+14.4 .14	+8 .22	+26 .25	+2 .28	-4 .34		
Adj % IMF	\$EN	CW	Marb	RE	Fat	\$W			
	+8.18	+18 .33	+4.3 .30	+1.1 .30	+0.05 .26	+38.58			
% IMF Ratio	B3R Tender Ten R065 [OSC-AMF-XF]						\$F		
	B3R W233 Elector TendTn R310 [OSF]						-7.94		
	B3R R310 Daisy 0128 0135 [AMF]						\$G		
Adj RE	17521640	B3R Retail Tender T232 [OSF]				+30.25			
		B3R X189 Blackbird T232 T037 [OSF]				\$QG			
		B3R T037 Blackbird 0097 R264 [AMF-OS]							
RE Ratio		B3R 8100 270 Bando 3149				+26.97			
		B3R 1147 8100 Bando 8092 [AMF]				\$YG			
		B3R 8092 5029 Blackbird 4004 [AMF]				+3.28			
Adj Rib Fat	B3R T152 Blackcap 1147 P090 [AMF]	B3R M048 Cafd 0125 [AMF-NHF]				\$B			
	#16020140	B3R P090 M048 Blackcap M209				+68.74			
		B3R M209 9193 Blkcap 7748							
Rib Fat Ratio	BW	CE	BWR	ADJ WW	WWR	ADJ YW	YWR	Test ADG	GR
	45	1	72	441	88				
Adj Rump Fat	Dam's Production Record				Dam's Ultrasound Production Record				
	ACT BW	BWR	WWR	YWR	% IMF	RE	Fat	RU Fat	
	4-71	4-103	7-106	6-103	6-101	6-99	6-105	6-90	
Rump Fat Ratio	Price: \$1200								
	Twin calf to Lot 64-9. Out of 10 year cow. By the way this cow weaned a total of 860lbs, Been doing her job for lots of seasons.								

As of 07/06/17



66-10**B3R D018 CCR Z231 Z016**

Birth Date: 11/1/16

Reg #: F1234523

Tattoo: D018

M6 BLANCO STANDARD 231 ET
EM825180

M6 NEW STANDARD 842 P ET

LT RIO BRAVO 3181 P
M6 MS GRID MAKER 2175 ET
LT RIO BLANCO 1234 P
BF MISS GAIN & GRADE 386
LHD CIGAR E46
MISS HOODOO Z6017
EATONS LEADER 2233 P
MS CC SCHURSHOT 1385MB3R Z016 CCR M207 1385
EF1163565M6 MS RIO GRADE 960 P ET
B/T SMART CHOICE M207 ET

MS COOLEY LEADER 1385P

EPDs	CE	BW	WW	YW	Milk	MCE	MTL	SC
	-2.8	2.1	33	67	6	2.4	23	1.3
Performance	BW	WW						
	95	587						

Price: \$1300

68-10**B3R D029 CCR 456 B022**

Birth Date: 10/26/16

Reg #: F1234622

Tattoo: D029

M6 TEN WHISTLES 456 P
M859441

M6 BELLS & WHISTLES 258 P

M6 COOL REP 8108 ET
M6 MS GAIN & GRADE 552 P
KEYS TEN-ACIOUS 166S
M6 MS TRADITION 526
M6 COOL REP 8108 ET
M6 MS 104 COMMANDER 7184 P ET
LC SUSPECT 0109 P ET
MS CCR IMPRSV 3472L7 PETB3R B022 CCR Z261 3472U13
F1199725M6 MS TEN MAKER 1100
M6 COOL MAKER 261 P

MS COOLEY SUSPECT 3472U13

EPDs	CE	BW	WW	YW	Milk	MCE	MTL	SC
	7.4	-0.9	35	62	14	5.3	31	1.1
Performance	BW	WW						
	76	601						

Price: \$1300

70-10**B3R D031 CCR LEDGER B028**

Birth Date: 9/28/16

Reg #: F1236895

Tattoo: D031

LT LEDGER 0332 P
M791626

LT BLUEGRASS 4017 P

LT ASSERTION 1277 P
LT PEARL'S BREEZE 2236 P
LT RIO BRAVO 3181 P
LT BRENDA'S EASE 3055PLD
M6 COOL REP 8108 ET
M6 MS 104 COMMANDER 7184 P ET
B/T SMART CHOICE M207 ET
MS CCR TRAD 1107L4 PB3R B028 CCR Z261 W006
F1199727LT BRENDA 6120 PLD
M6 COOL MAKER 261 P

B3R W006 CCR TRAD SC M207

EPDs	CE	BW	WW	YW	Milk	MCE	MTL	SC
	2.4	0.4	31	59	11	3.0	27	1.4
Performance	BW	WW						
	74	602						

Price: \$1300

67-10**B3R D023 CCR 456 A019**

Birth Date: 12/1/16

Reg #: F1234619

Tattoo: D023

M6 TEN WHISTLES 456 P
M859441

M6 BELLS & WHISTLES 258 P

M6 COOL REP 8108 ET
M6 MS GAIN & GRADE 552 P
KEYS TEN-ACIOUS 166S
M6 MS TRADITION 526
EC NO DOUBT 2022 P
JCH MS BULL DOZER T388
RC CHARLIE 0327
MS CCR TRAD 1107L9 PB3R A019 W13 Y019
F1180399M6 MS TEN MAKER 1100
DCR MR SOLUTION W13

B3R Y019 CCR TRAD L9P 0327

EPDs	CE	BW	WW	YW	Milk	MCE	MTL	SC
	-1.2	2.3	46	82	12	1.0	35	1.3
Performance	BW	WW						
	98	719						

Price: \$1300

69-10**B3R D030 CCR LEDGER B016**

Birth Date: 9/29/16

Reg #: F1236894

Tattoo: D030

LT LEDGER 0332 P
M791626

LT BLUEGRASS 4017 P

LT ASSERTION 1277 P
LT PEARL'S BREEZE 2236 P
LT RIO BRAVO 3181 P
LT BRENDA'S EASE 3055PLD
M6 COOL REP 8108 ET
M6 MS 104 COMMANDER 7184 P ET
RC CHARLIE 0327
MS CCR TRAD 1107L9 PB3R B016 CCR Z061 Y024
F1199712LT BRENDA 6120 PLD
M6 COOL MAKER 261 P

B3R Y024 CCR TRAD L9P 0327

EPDs	CE	BW	WW	YW	Milk	MCE	MTL	SC
	8.6	-2.8	23	50	12	4.2	24	1.4
Performance	BW	WW						
	65	589						

Price: \$1300





HOW TO PARTICIPATE ON THE PHONE OR ONLINE USING SUPERIORCLICKTOBID.COM

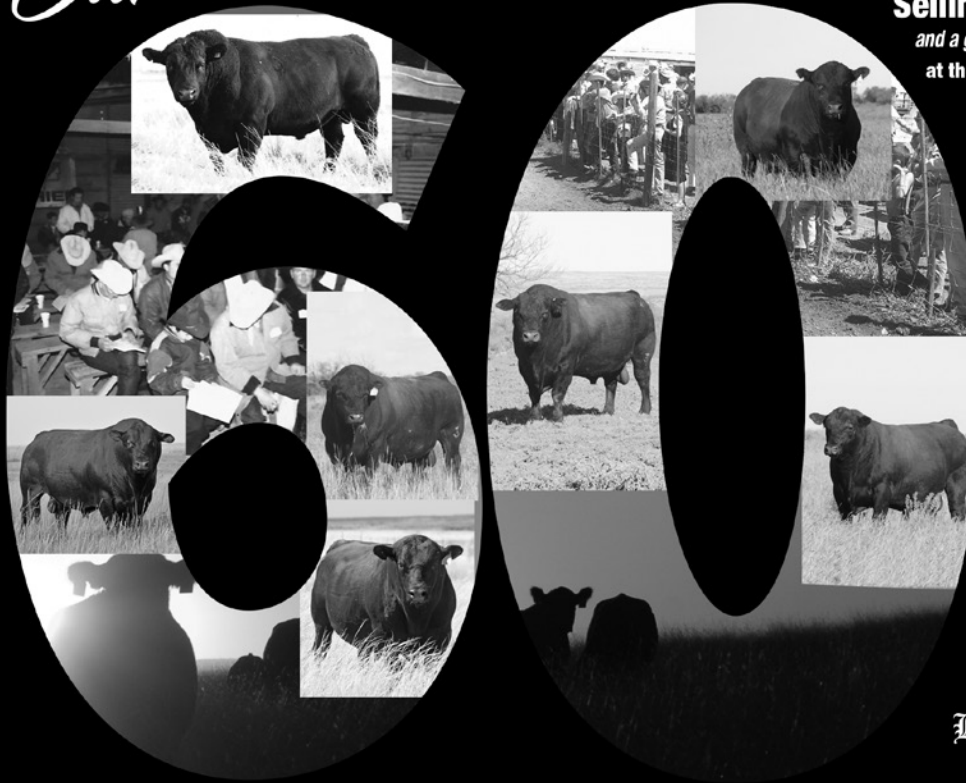
Turn in Bids Over the Phone. This is our traditional method of buying livestock. To get started simply go online to www.superiorlivestock.com and click on the tab titled "Register for a Buyer Number". Select the registration form for Superior Productions and print the registration form, fill it out and fax it in to Superior Productions at (817) 378-3380 with a signature on it, or scan and email the form to info@superiorauction.com. You can also mail it in to the address provided on the form. Upon receipt of this information Superior will call you with a buyer's number and the bid line phone number that you will use on sale day to place bids over the phone.

Click-To-Bid. This is Superior's online bidding platform for cattle buying. **Please note that high speed internet is required – this is not for dial-up or satellite internet.** Registration is free, but you must become a member of www.superiorclicktobid.com to sign up. Becoming a member is easy - just go to the homepage of www.superiorclicktobid.com and follow the out-lined steps to get started. Input your information and select a username and password. You will receive an e-mail confirming you are a member. From that point forward you just have to sign in and select the sale you would like to register for and once approved you will receive an e-mail confirming which sale you are now registered for.

Viewing the Auction. There are 2 places to view the sale broadcast live on the internet: www.superiorlivestock.com or www.superiorclicktobid.com. Just go to the home page of either website and select the auction. If you just want to watch the auction on your computer, smartphone or tablet go to www.superiorlivestock.com, but if you want to bid over the computer you must go to www.superiorclicktobid.com. Remember you can call in to bid while watching on the internet, but you must be a member of www.superiorclicktobid.com to "click-to-bid". Your computer must have Flash Media Player installed for this website to view the auction. If you have any questions, please call the Superior Productions office at 800-431-4452.

Bidders who are successful in making purchases via satellite or internet will be contacted by the ranch after the sale to settle payment and make shipping arrangements.

Our



February 10, 2018

Selling 200+ Angus Bulls

and a great group of B3R Charolais Bulls!
at the ranch, east of Estelline, Texas

th
year
in the registered
cattle business.



Bradley 3 Ranch, Ltd.

Ranch raised bulls for Ranchers since 1955.

Mary Lou, (940) 585-6471

James, (940) 585-6171

Minnie Lou, (940) 585-8075

Ranch Office, (806) 888-1062



www.bradley3ranch.com

Directions to the Ranch

Please note: Directions from Map Quest, Google and YellowPages.com are incorrect to our ranch. Please use these directions instead.

BEWARE! Estelline, TX is a speed trap. If you drive through Estelline, please pay attention to the speed limit.

FROM CHILDRESS, TX: US 287 NW 19 miles, turn right on FM 1619 (look for ranch sign), go 3 miles turn right at the B3R sign, go 4 miles on gravel road, ranch head quarters will be on your left.

FROM MEMPHIS, TX: US 287 South 11 miles, turn left on FM 1619, (look for ranch sign), go 3 miles, turn right at the B3R sign, go 4 miles on gravel road, ranch head quarters will be on your left.

FROM WELLINGTON, TX: US 83 South, go through blinking light at junction of 62 and 83 continuing South for 4 miles. Turn right at Vest Ranch sign, follow gravel road for 10 miles. Ranch head quarters will be on your right.

FROM ALTUS, OK: Go West on US 62 for approximately 49 miles. At US 83 intersection, turn left /south. Go four miles on 83. Turn right / west at the Vest Ranch sign onto County Road K. Follow gravel road for 10 miles. Ranch headquarters will be on your right.

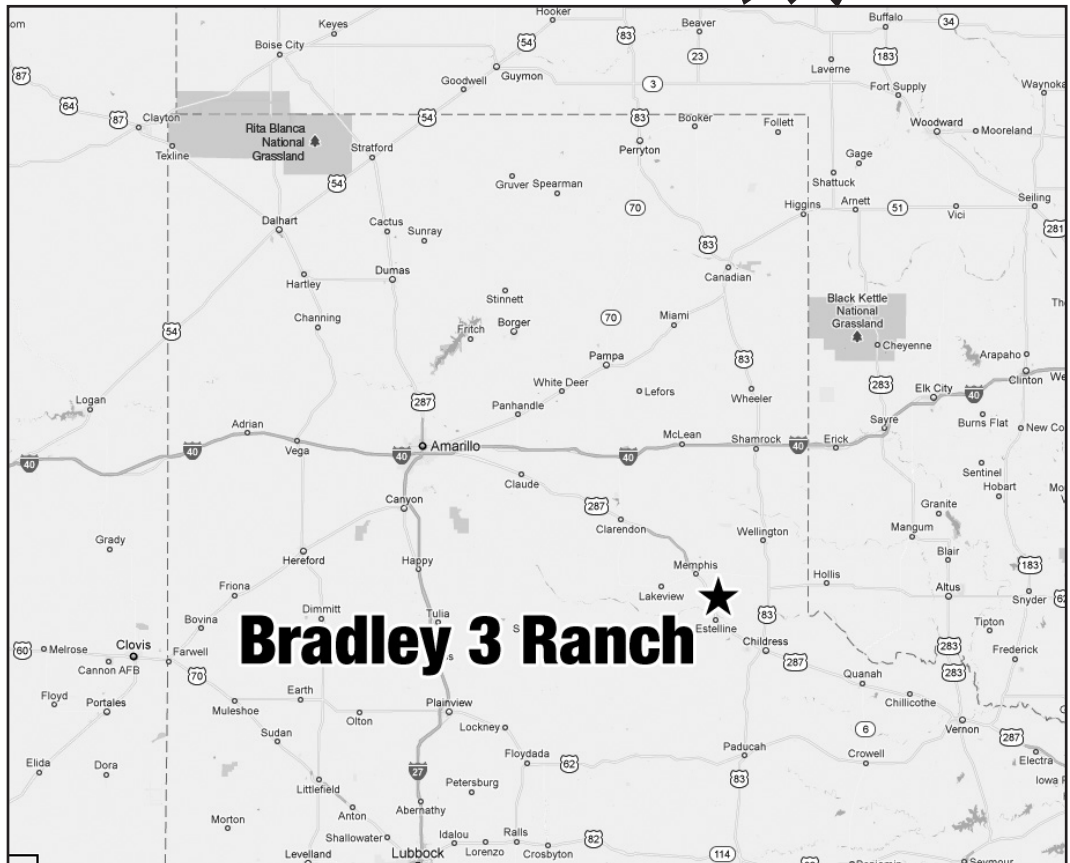
MOTELS - CHILDRESS

Hampton Inn (940)937-3500
 Sale Headquarters
 Holiday Inn Express (940)937-0900
 Days Inn (940)937-0622

NEARBY AIRPORT FOR PRIVATE AIRCRAFT -

Childress Municipal Airport - 6,000 X 75 asphalt runway;
 Jet A and 100 low-lead AV gas.
 Altus, OK - Quartz Mountain Regional Airport: (580) 482-8833 5000 ft runway, jet fuel available, hours of operation 7 a.m. - 9 p.m
 Altus, OK - Enterprise Rent A Car: (580) 480-1625 (off airport site)

From Amarillo, TX.....1.5-2 hours
 From Wichita Falls, TX2 hours
 From Oklahoma City, OK 4 hours
 From Fort Worth, TX..... 4 hours



PEN LOCATOR

20	21										
18	19										
17	1	2	3	4	5	6	7	8	9	10	
16					15	14	13	12	11		
sale barn									NORTH →		

Bradley3 Ranch, Ltd.

15591 CR K

Memphis, TX 79245-5003

www.bradley3ranch.com

**Join us on July 28, 2017 • 10:00 a.m.
for our Annual Heifer Sale**



These weaned heifers sell July 28